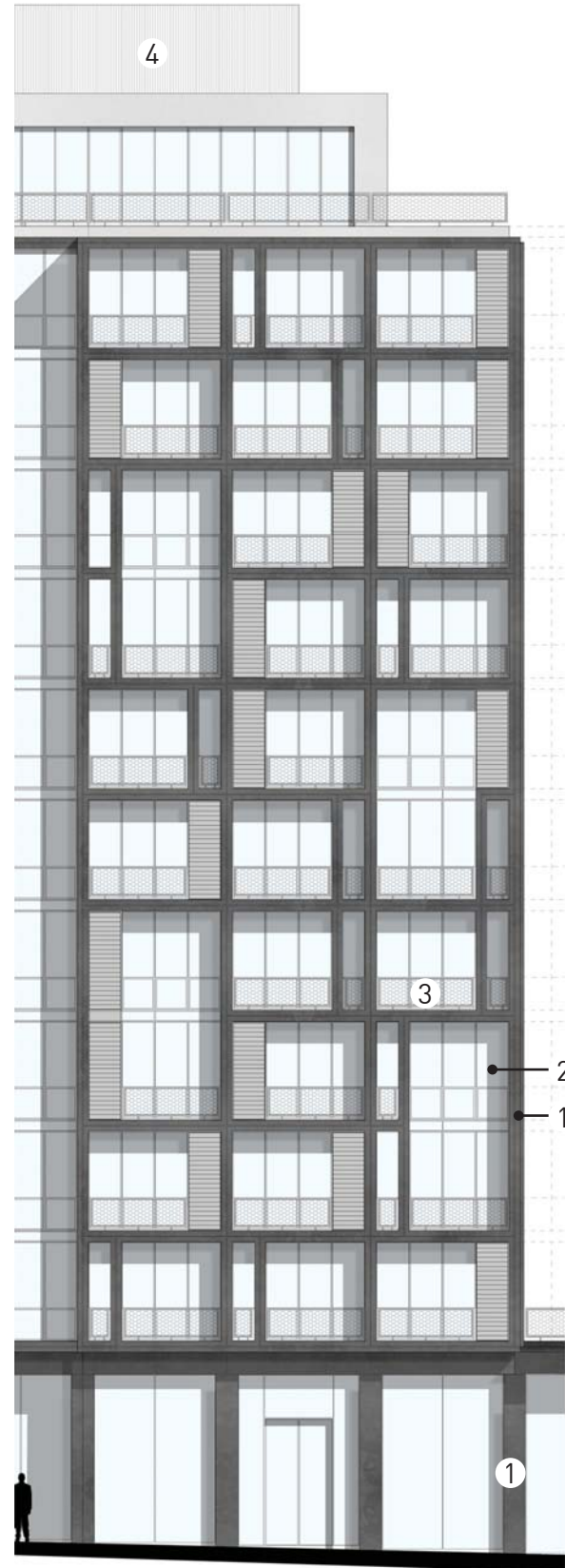
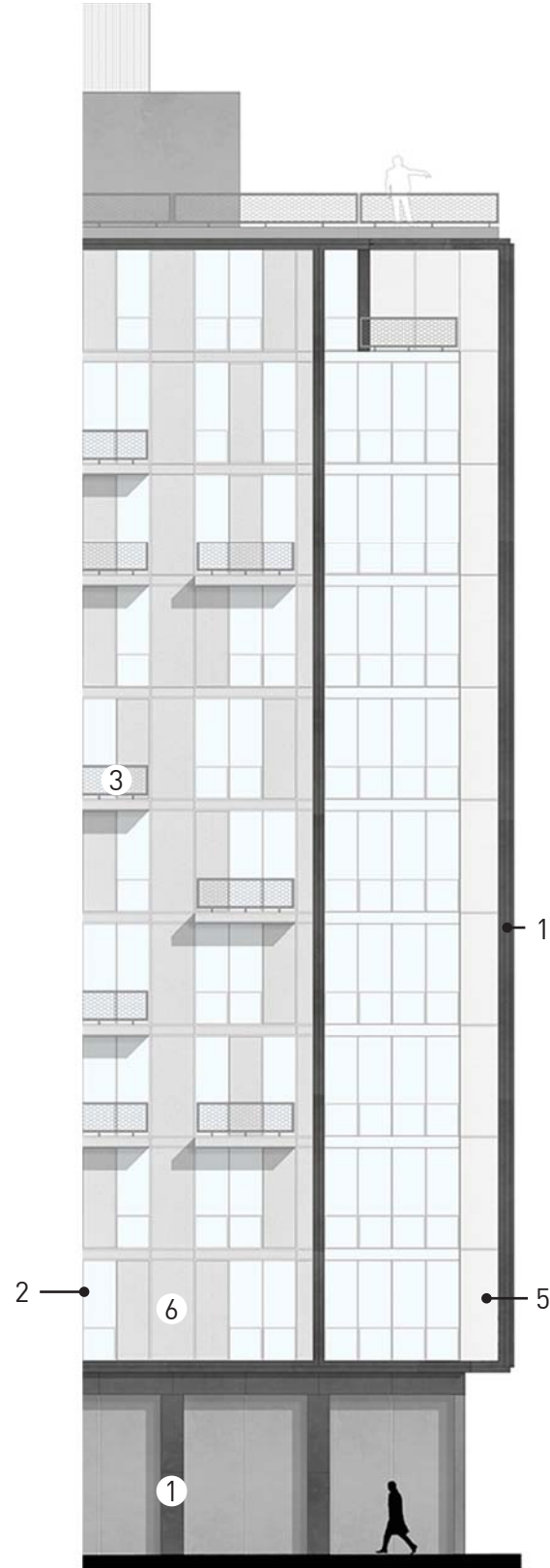


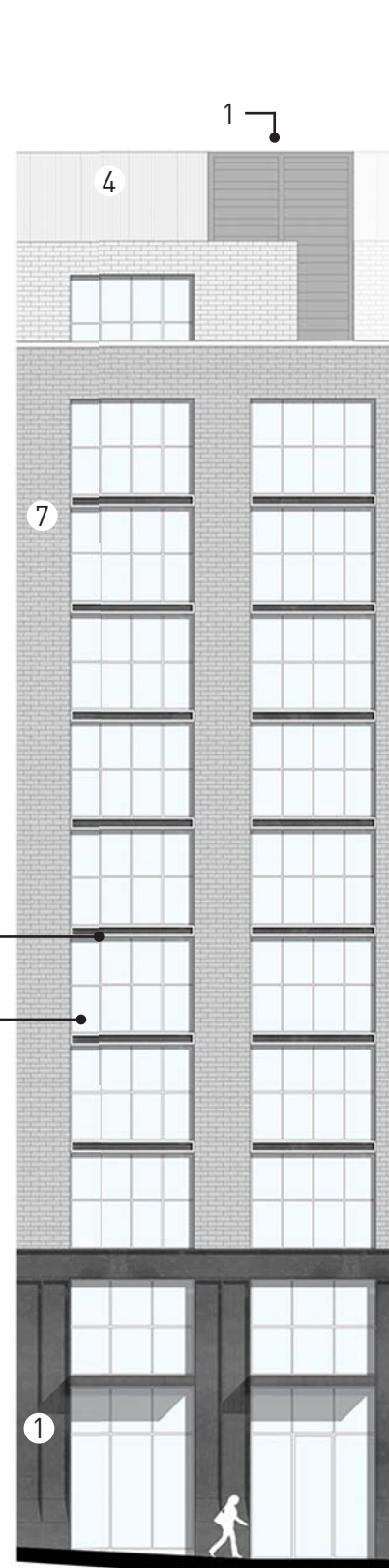
A. 331 N ST NE
ENLARGED ELEVATION



B. 331 PUBLIC ALLEY
ENLARGED ELEVATION

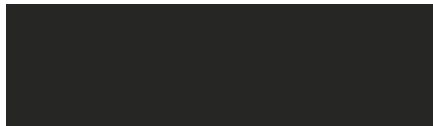






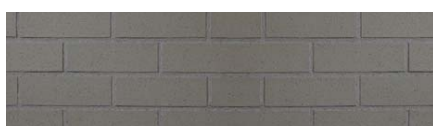


C. 301 N ST NE
ENLARGED ELEVATION



NOTES:
EXTERIOR FACADE ARTICULATIONS ARE SCHEMATIC. THE BUILDING ELEVATIONS WILL BE FINALIZED WITH THE ISSUANCE OF THE BUILDING PERMIT.

MATERIAL LEGEND

-  1. DARK GREY ALUMINUM METAL FRAME
-  2. MEDIUM GREY ALUMINUM METAL FRAME WINDOWS
-  3. WIRE MESH METAL
-  4. DARK GREY PERFORATED METAL MECHANICAL SCREEN
-  5. DARK GRAY FIBER CEMENT BOARD PANELS
-  6. LIGHT GRAY FIBER CEMENT BOARD PANELS
-  7. BRICK VENEER A
-  8. BRICK VENEER B



AA STUDIO



301 N AND 331 N STREETS NE

PERSPECTIVE - 4TH AND N STREETS

OCTOBER 30, 2015

A25





AA STUDIO



301 N AND 331 N STREETS NE

PERSPECTIVE - 3RD STREET

OCTOBER 30, 2015

A27







AA STUDIO

TORTI
GALLAS
URBAN

FOULGER-PRATT

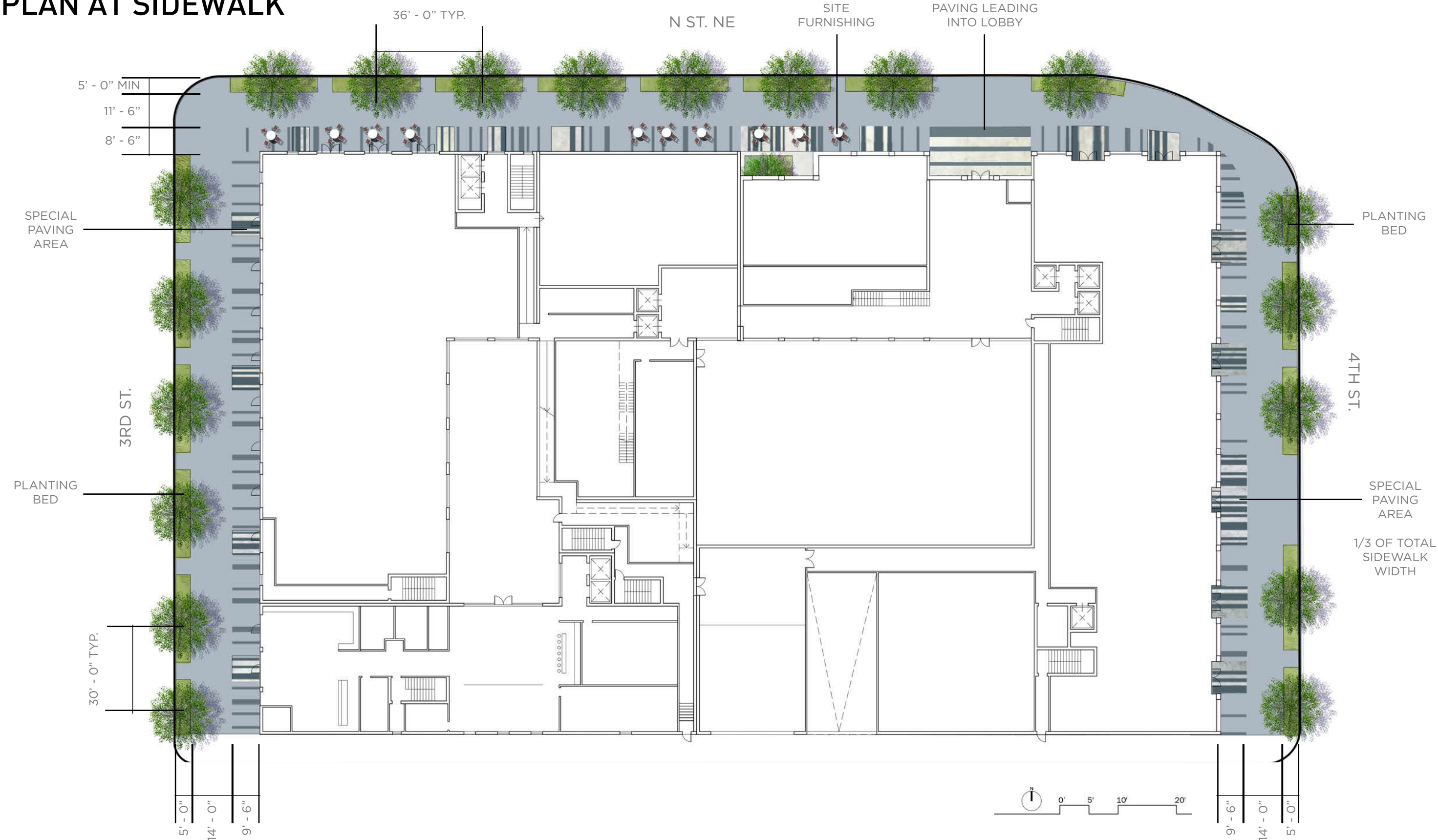
301 N AND 331 N STREETS NE

PERSPECTIVE - 4TH AND PUBLIC ALLEY

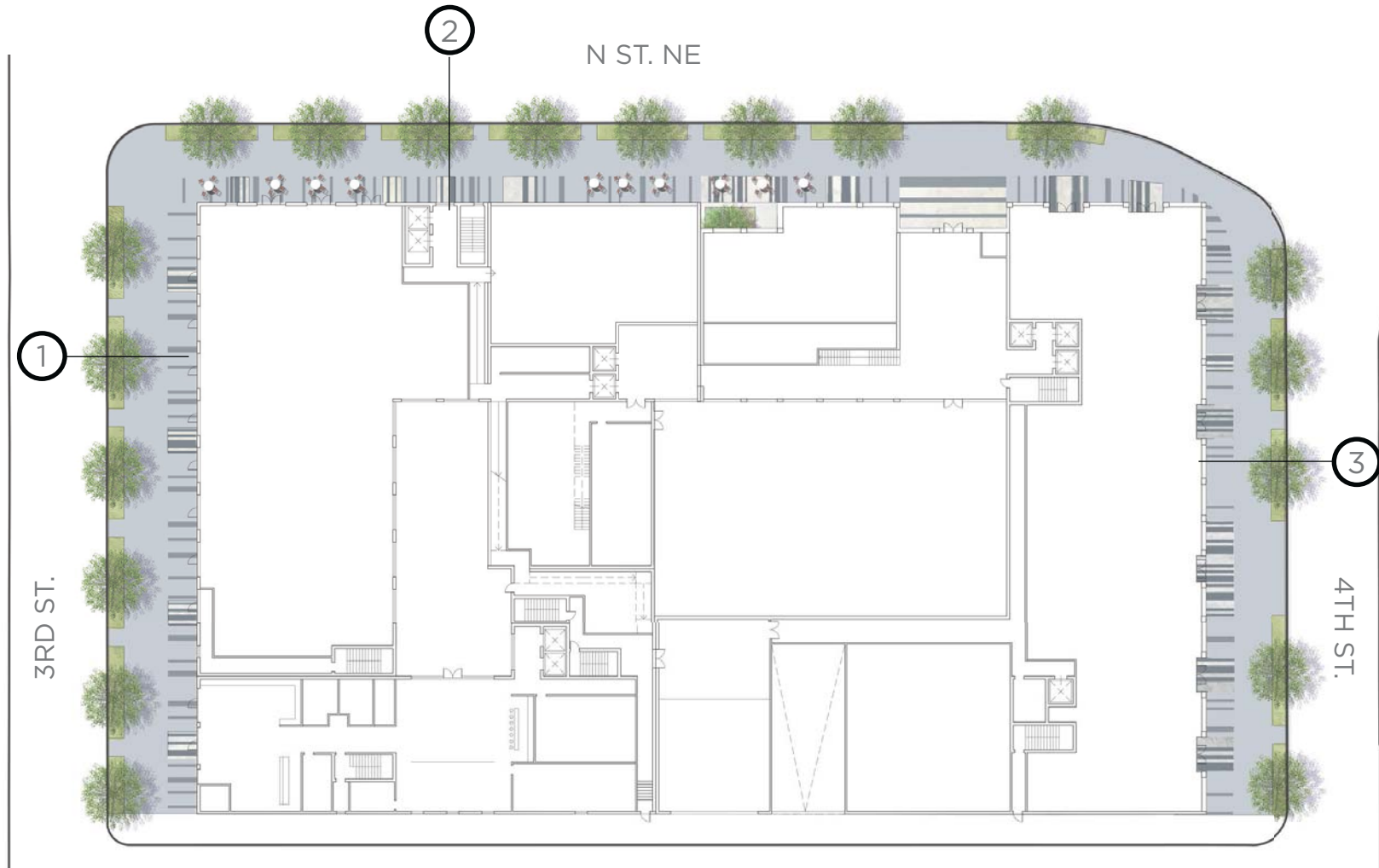
OCTOBER 30, 2015

A30

PLAN AT SIDEWALK

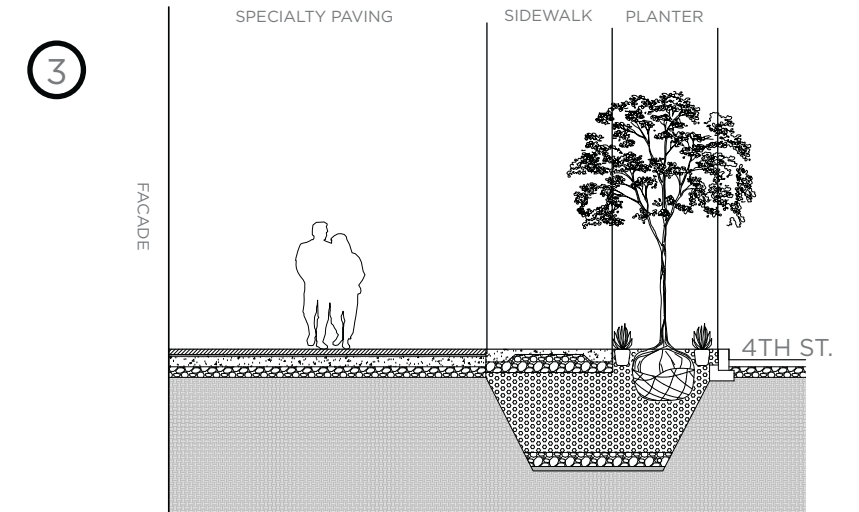
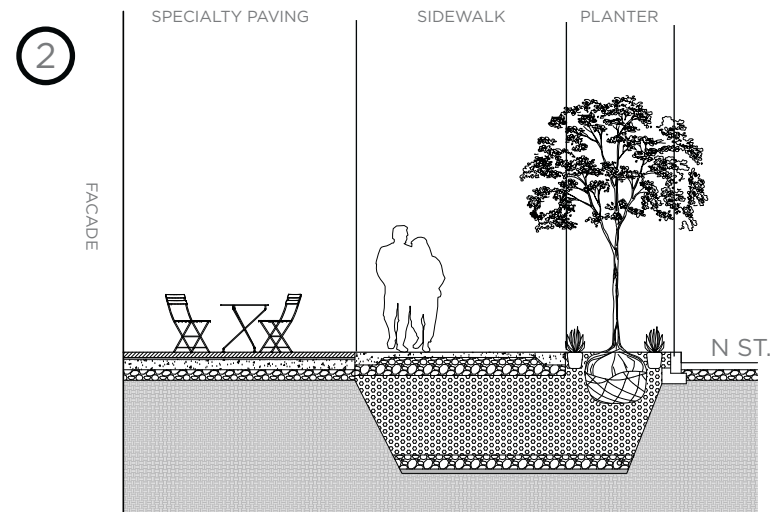
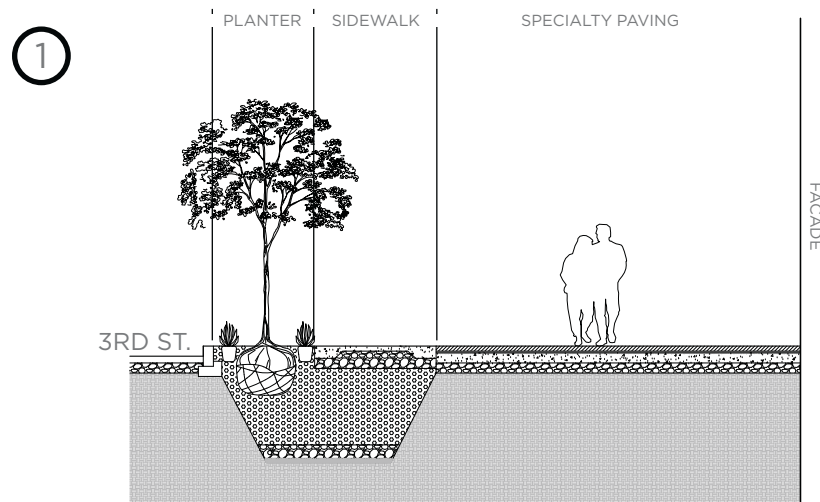


STREETSCAPE



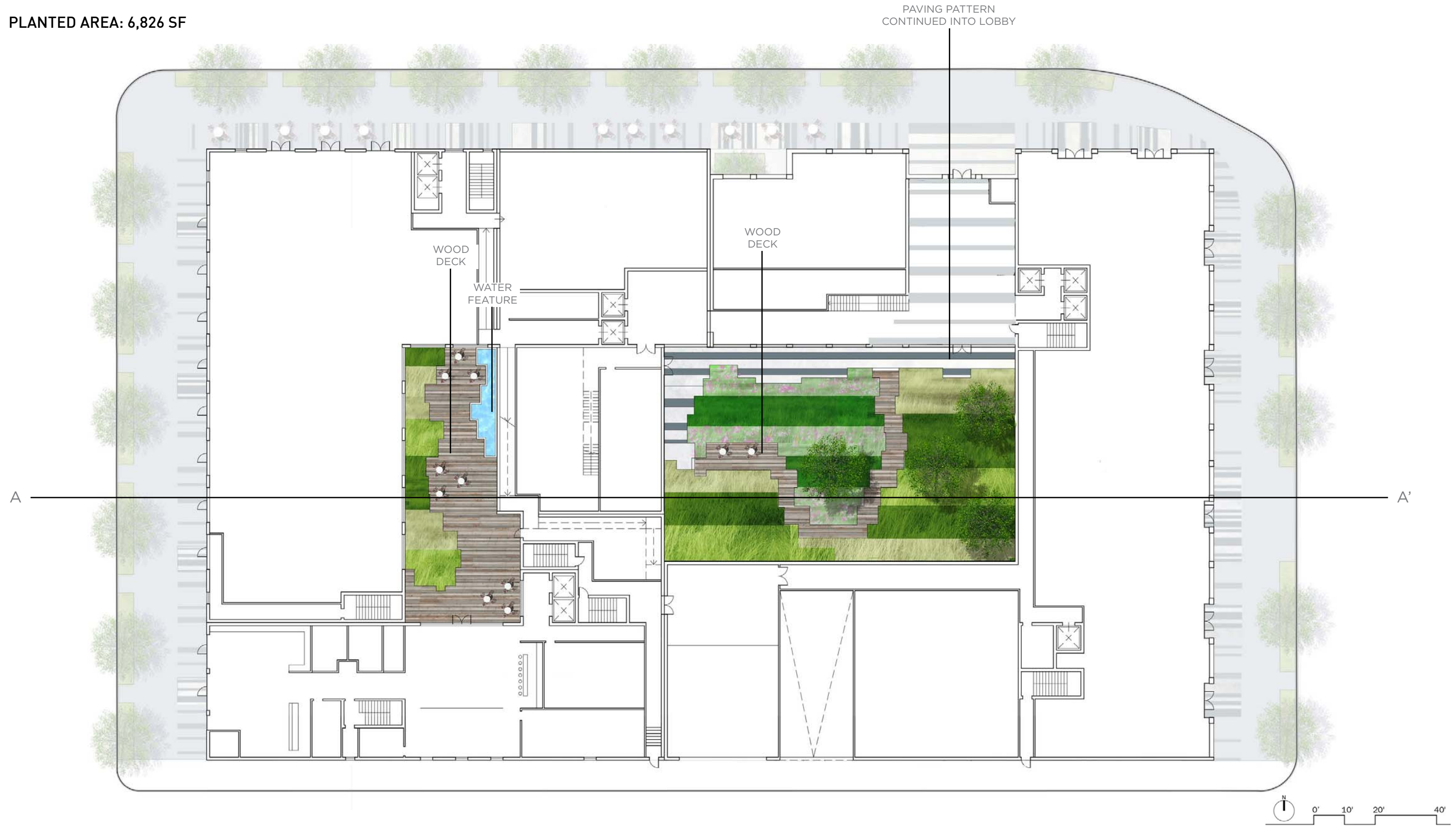
NOMA STREETSCAPE GUIDELINES

3rd Street, NE							<i>Quercus coccinea</i> (Scarlet Oak), <i>Quercus bicolor</i> (Swamp White Oak), <i>Quercus phellos</i> (Willow Oak)	N/A	Washington Globe	Exposed Aggregate, 3x3 scoring sidewalk, 3x3 scoring across driveways	Granite	Brick
4th Street, NE	3'	6'	6'	10'	-	-	<i>Sophora japonica</i> (Japanese Pagoda Tree), <i>Koelreuteria paniculata</i> (Golden Rain Tree)	N/A	Washington Globe	Exposed Aggregate, 3x3 scoring sidewalk, 3x3 scoring across driveways	Granite	Brick
N Street	3'	5'	10' - Corn 8' - Res.	8' - Res.	-	6'-com.	<i>Celtis laevigata</i> (Sugar Hackberry), <i>Carpinus caroliniana</i> (American Hornbeam)	N/A	Washington Globe	Exposed Aggregate, 3x3 scoring sidewalk, 3x3 scoring across driveways	Granite	Brick



PLAN AT PLAZA LEVEL

PLANTED AREA: 6,826 SF



SECTION A-A' THROUGH PLAZA

